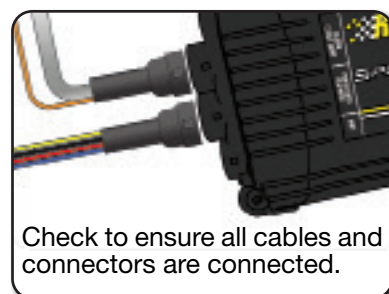


3 CHECK YOUR WORK



CHECK THE LIGHT



- SOLID RED** : Power is on and ready to go.
- RED GREEN** : Flashing 3 red 1 green, data is recording and writing to memory card.
- SOLID GREEN** : Firmware update in progress.
- SOLID YEL-LOW** : SD memory card not recognized.

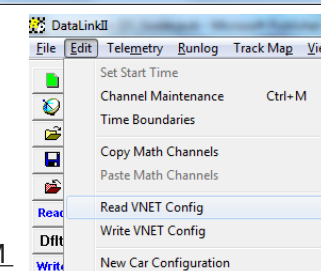
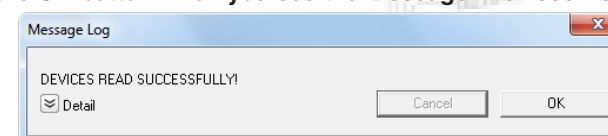
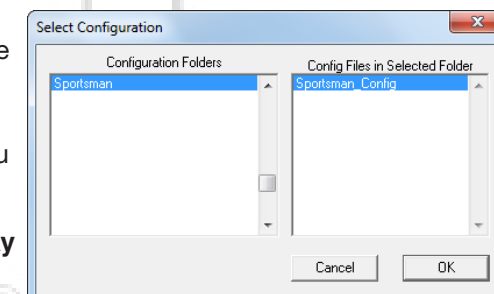
? If you wish to set time and date, refer to back page.

! DO NOT REMOVE OR INSERT SD CARD WITH POWER ON.

4 ADDING OPTIONAL VNET SENSORS

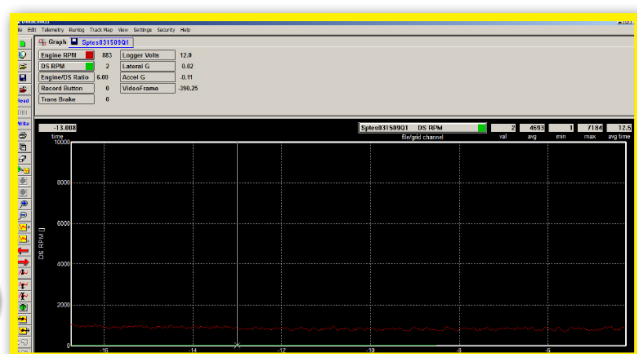
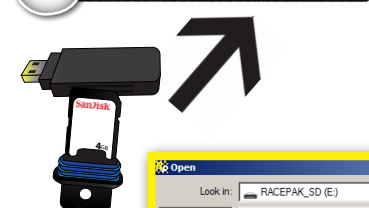
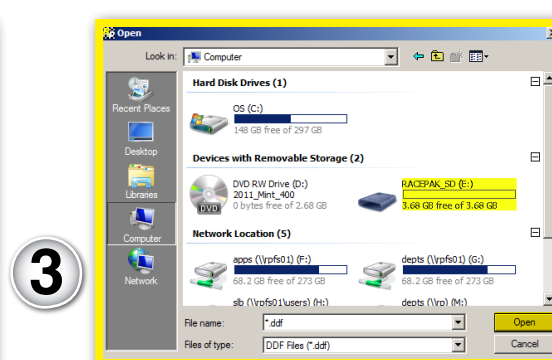
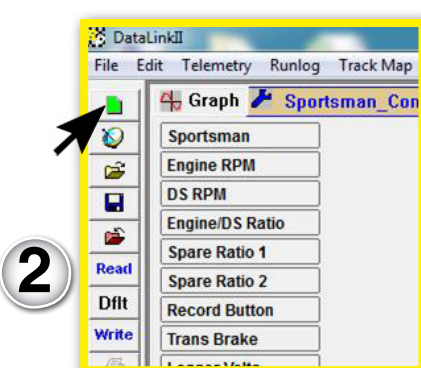
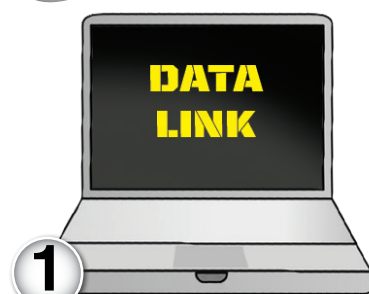
When installing new sensors or items on the V-Net system, you must update/sync the configuration file in your PC to insure that any changes and/or updates performed on your Racepak system will properly take affect. Carefully follow the instructions below to perform the configuration update.

- Start the DataLink software.
- Connect the programming cable between the Racepak data logger in the car and your PC.
- Apply power to the RacePak data logger.
- If the Sportsman_Config is not already loaded, select File from the menu bar then select **Open Car Configuration**. Select the Sportsman_Config and click on the OK button.
- Select **Edit** from the menu bar then select **Read VNET Config**. You may also use the 'READ' button in the toolbar which appears on the left side of your screen.
- The message log will appear and your configuration will begin to update. Click on the OK button when you see the message "Devices Read Successfully".

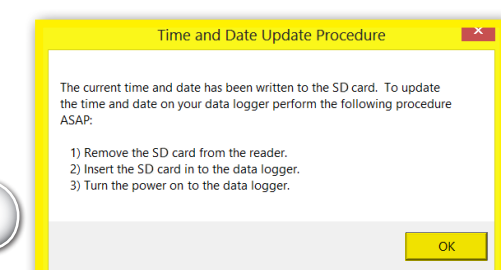
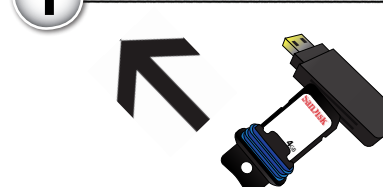
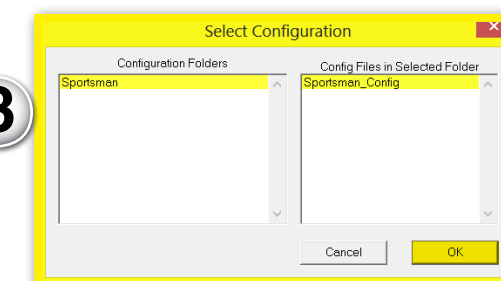
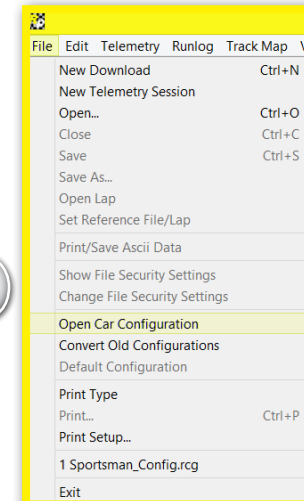
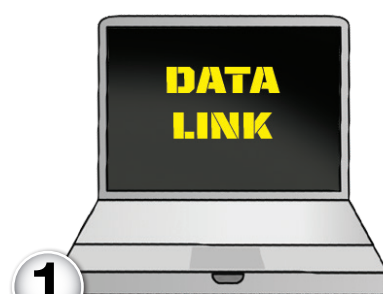


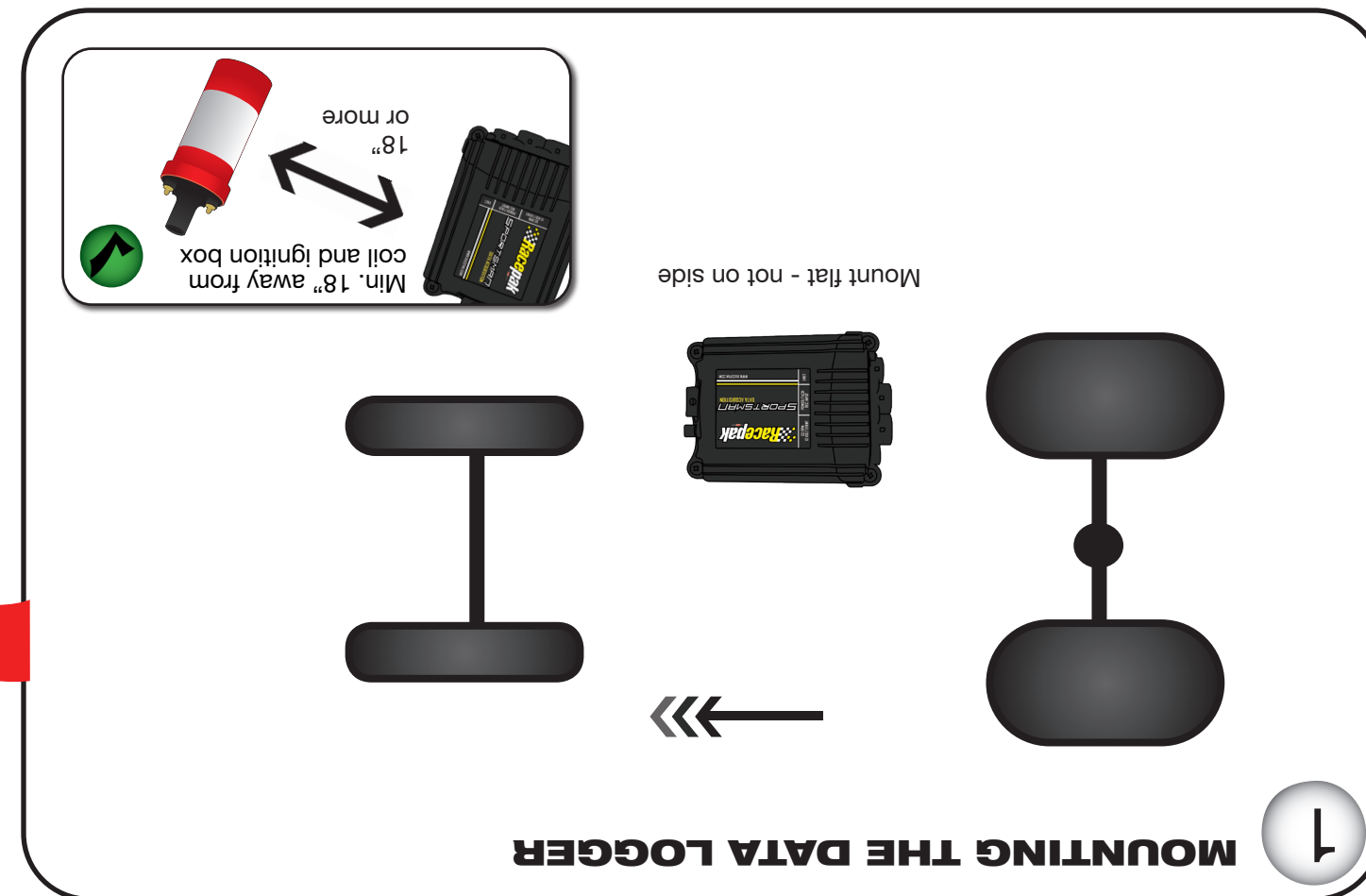
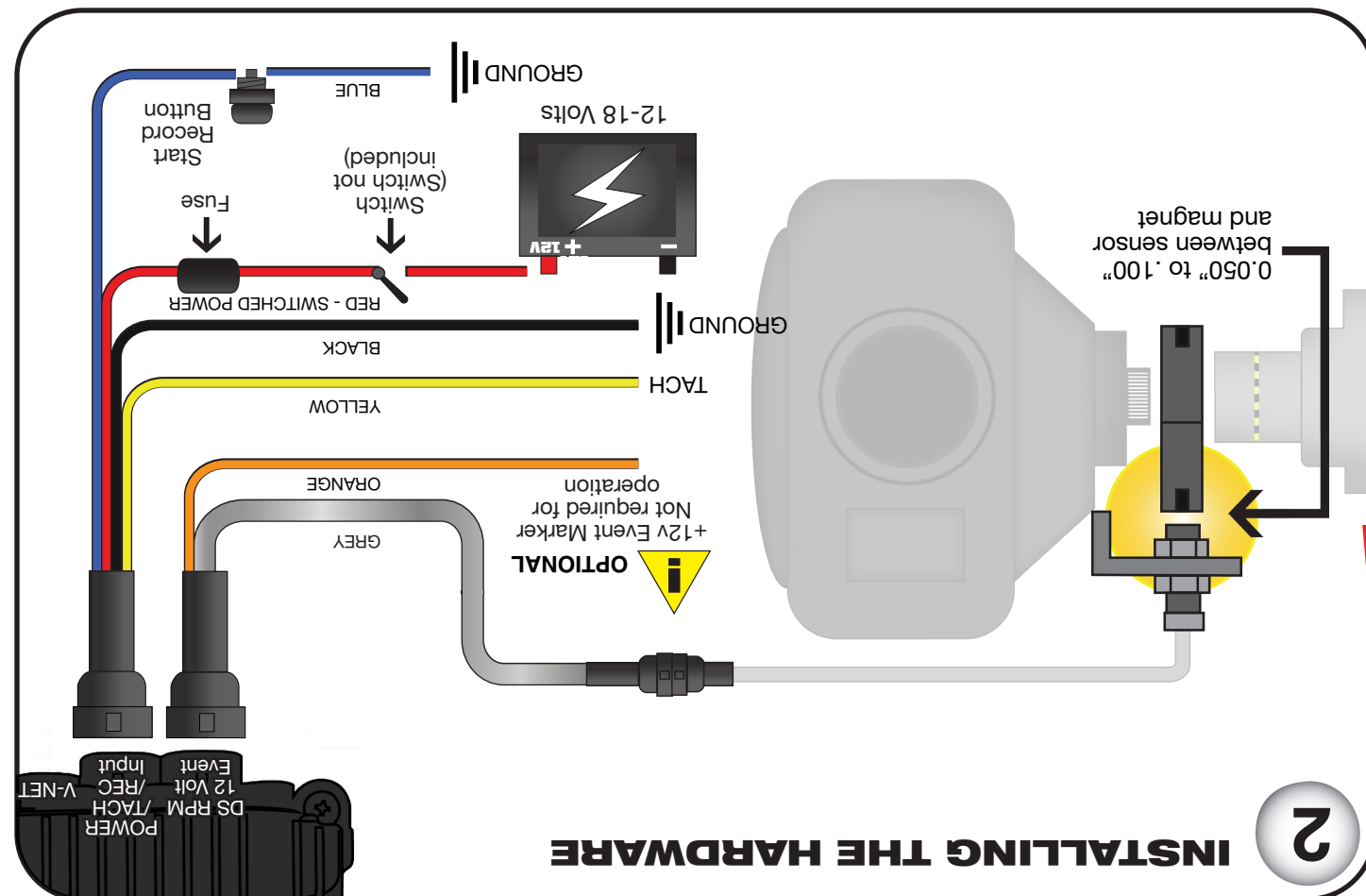
- If you receive an error at the beginning of this step, verify that you are set on the COM port that matches the port that the cable is installed on.
- Select **File** from the menu bar and select **Save**. This ensures that the changes performed are saved into the configuration file on your PC.
- Programming is now complete. Turn the off the power to the Racepak data logger and disconnect the serial cable.

5 DOWNLOADING A RUN FILE



6 SETTING THE DATE AND TIME IN THE LOGGER





1801 RUSSELVILLE ROAD . BOWLING GREEN . KY 42101
WWW.RACEPAK.COM / 1-866-464-6553

Revised 11/21

MANL-FRM 32442



610-KT-SPRTMN

WHAT'S IN THE BOX

- (A) SPORTSMAN Data Logger
- (B) Power/TACH/REC Harness
- (C) DS RPM/12 Volt Event Harness
- (D) SD Memory Card - *inserted in logger*
- (E) V-Net Terminator End Cap - *attached to logger*
- (F) Driveshaft Sensor Bracket
- (G) Driveshaft Sensor
- (H) 4 x Rubber Mounting Feet
- (I) Start Record Button
- (J) Assorted connectors
- (K) Programming Cable
- (L) USB to Serial Cable Adapter
- (M) SD Mobile Card Reader
- (N) USB Memory Stick



QUICKSTART GUIDE